

<b>AMENDMENT OF SOLICITATION/MODIFICATION OF CONTRACT</b>				1. CONTRACT ID CODE	PAGE 1 OF 6 PAGES
2. AMENDMENT/MODIFICATION NO. AMENDMENT NO. 0010		3. EFFECTIVE DATE 06/03/14	4. REQUISITION/PURCHASE REQ. NO.	5. PROJECT NO. (If applicable) 12-0088	
6. ISSUED BY CODE		mks	7. ADMINISTERED BY (If other than Item 6) CODE		See Item 6
8. NAME AND ADDRESS OF CONTRACTOR (No., street, county, State and ZIP Code)  Officer in Charge of Construction MCI-East 1005 Michael Road Camp Lejeune, NC 28547-2521			(X)	9A. AMENDMENT OF SOLICITATION NO. N40085-12-R-0088	
			X	9B. DATED (SEE ITEM 11) 03/25/14	
				10A. MODIFICATION OF CONTRACT/ORDER NO.	
				10B. DATED (SEE ITEM 11)	
CODE	FACILITY CODE				

**11. THIS ITEM ONLY APPLIES TO AMENDMENTS OF SOLICITATIONS**

The above numbered solicitation is amended as set forth in Item 14. The hour and date specified for receipt of Offers  is extended,  is not extended.  
 Offers must acknowledge receipt of this amendment prior to the hour and date specified in the solicitation or as amended, by one of the following methods:  
 (a) By completing items 8 and 15, and returning \_\_\_\_\_ copies of the amendment; (b) By acknowledging receipt of this amendment on each copy of the offer submitted;  
 or (c) By separate letter or telegram which includes a reference to the solicitation and amendment numbers. FAILURE OF YOUR ACKNOWLEDGMENT TO BE RECEIVED AT THE PLACE DESIGNATED FOR THE RECEIPT OF OFFERS PRIOR TO THE HOUR AND DATE SPECIFIED MAY RESULT IN REJECTION OF YOUR OFFER. If by virtue of this amendment your desire to change an offer already submitted, such change may be made by telegram or letter, provided each telegram or letter makes reference to the solicitation and this amendment, and is received prior to the opening hour and date specified.

12. ACCOUNTING AND APPROPRIATION DATA (If required)

**13. THIS ITEM ONLY APPLIES TO MODIFICATION OF CONTRACTS/ORDERS.  
IT MODIFIES THE CONTRACT/ORDER NO. AS DESCRIBED IN ITEM 14.**

CHECK ONE	A. THIS CHANGE ORDER IS ISSUED PURSUANT TO: (Specify authority) THE CHANGES SET FORTH IN ITEM 14 ARE MADE IN THE CONTRACT ORDER NO. IN ITEM 10A.
	B. THE ABOVE NUMBERED CONTRACT/ORDER IS MODIFIED TO REFLECT THE ADMINISTRATIVE CHANGES (such as changes in paying office, appropriation date, etc.) SET FORTH IN ITEM 14, PURSUANT TO THE AUTHORITY OF FAR 43.103(b).
	C. THIS SUPPLEMENTAL AGREEMENT IS ENTERED INTO PURSUANT TO AUTHORITY OF:
	D. OTHER (Specify type of modification and authority)

E. IMPORTANT: Contractor  is not,  is required to sign this document and return \_\_\_\_\_ copies to the issuing office.

14. DESCRIPTION OF AMENDMENT/MODIFICATION (Organized by UCF section headings, including solicitation/contract subject matter where feasible.)

12-0088 Repair Electronic Maintenance Shop, Building HP104

CONTINUED

Except as provided herein, all terms and conditions of the document referenced in Item 9A or 10A, as heretofore changed, remains unchanged and in full force and effect.

15A. NAME AND TITLE OF SIGNER (Type or print)		16A. NAME AND TITLE OF CONTRACTING OFFICER (Type or print)	
15B. CONTRACTOR/OFFEROR	15C. DATE SIGNED	16B. UNITED STATES OF AMERICA	16C. DATE SIGNED
(Signature of person authorized to sign)		(Signature of Contracting Officer)	

N40085-12-R-0088

Amendment 0010

Page 2 of 6

### CONTINUATION SHEET

1. Question: There are 7 new RTU's that will require new curbs. There are 5 H&V units that are going on the roof that will require new curbs (the existing H&V units are under the roof). Will any additional structural support be required for these new curbs?

1. Response: Concerning structural modifications required at new roof penetrations for (7) RTUs (5) HVUs (6) new flue penetrations, please see the attached sketches showing Structural changes to support these units:

Sketch S2 - Record Drawing of Roof Framing Plan showing unit locations and additional structural members

Sketch SK-2.1 Detail for Typical Roof Opening and Mechanical Curb Support

Sketch SK-2.2 Typical Deck Opening and Closure Detail

Sketch SK-2.3 Typical Added Reinforcement at Joists

REV	DESCRIPTION	DATE	APPROVED
1	REVISED AS SHOWN	12/11/10	[Signature]



PLAN NOTES:

- ROOF DECK SHALL BE 1 1/2" DEEP 22 GA. IN 6" TYPE B DECK CONDITION (MINIMUM). SEE PLAN FOR DECK WALL LOCATION.
- BRIDGING SHALL BE CROSS BRIDGING WITH SIZE SPECIFICATIONS FOR LH SERIES JOISTS SECTION 4.7.
- ALL JOISTS SHALL BE CAMBERED IN ACCORDANCE WITH SECTION 4.7.
- PROVIDE 4 DECK WELDS @ 12" O.C. @ DECK PERIMETER EDGE.
- PROVIDE CONTINUOUS 4" x 3" x 1/2" @ TOP EDGE OF STEEL JOIST.
- IF STEEL JOIST MANUFACTURER'S RECOMMENDATION FOR WELDING SEATS @ ALL JOIST ENDS.
- PROVIDE 4" x 3" x 1/2" @ 2'-0" O.C. TYP. WITH 1/2" THICK SLOTTED CONNECTION. PROVIDE 1/2" x 3/8" x 3/16" @ 6" O.C. HOOK, TOP & BOT. PROVIDE 1/2" x 3/8" x 3/16" @ 6" O.C. HOOK, TOP & BOT.
- NO INDICATED ROOF DRAIN.

9. FILL CELLS W/2000 PSI CONCRETE AND 2" x 1/2" SIZE LAP SCREWS @ 12" O.C. @ CORNER AND AT LIMIT. PROVIDE FULL HEIGHT OF STANDARD METAL TYPE SCREW OF MINIMUM SIZE INDICATED.

10. ROOF LIVE LOAD=20 PSF DEAD LOAD=20 PSF (NET UPLIFT=10 PSF)

11. STANDARD METAL TYPE SCREW SHALL BE A MINIMUM SIZE INDICATED.

12. INDICATES 18 GAGE DECK W/A 8 WELDS @ 6" O.C. AND 2" x 1/2" SIZE LAP SCREWS @ 12" O.C. @ CORNER AND AT LIMIT.

13. INDICATES 20 GAGE DECK W/A 8 WELDS @ 6" O.C. AND 2" x 1/2" SIZE LAP SCREWS @ 12" O.C. @ CORNER AND AT LIMIT.

14. NON-LOAD BEARING WALLS ARE NOT SHOWN ON PLAN. SEE NOTE 3 (SHEET S1).

15. "TCCJ" SEE NOTE TO SHEET S11.

16. "TNCJ" SEE NOTE TO SHEET S11.

1. ROOF FRAMING PLAN  
SCALE 1/4" = 1'-0"  
FINITE BEARING ELEVATION SHOWN AS 1'-1" ABOVE FINISH FLOOR (SEE PLAN).

SATISFACTORY TO MANUFACTURER'S DRAWING  
DIRECTOR: [Signature]  
DATE: 02-28-2010  
REV: 02-28-2010

RECORD DRAWING  
LETTER DATED 5/26/25  
S2

COMP: LEIBERTEC  
ELECTRONICS COMMUNICATIONS  
MANUFACTURING (P-527)  
10001  
CONTRACT: 02-28-2010  
SHEET 20 OF 28

ATLANTIC DIVISION  
MATERIALS ENGINEERING COMPANY  
10001  
CONTRACT: 02-28-2010  
SHEET 20 OF 28

18 GAGE  
22 GAGE  
DOUBLE JOIST  
TCCJ  
TNCJ  
L1  
L2  
L3  
1'-2" @ 18" O.C.  
5' SPACES @ 6'-0" O.C.  
FACE OF BRICK AT HIGH ROOF  
FACE OF BRICK AT LOW ROOF  
FACE OF BRICK AT HIGH ROOF  
FACE OF BRICK AT HIGH ROOF

RTU-1 600 LBS  
RTU-2 600 LBS  
RTU-3 600 LBS  
RTU-4 800 LBS  
RTU-5 800 LBS  
HVU-1 1650 LBS  
HVU-2 1650 LBS  
HVU-3 1650 LBS  
HVU-4 1650 LBS  
HVU-5 1650 LBS

18 GAGE  
22 GAGE  
DOUBLE JOIST  
TCCJ  
TNCJ  
L1  
L2  
L3  
1'-2" @ 18" O.C.  
5' SPACES @ 6'-0" O.C.  
FACE OF BRICK AT HIGH ROOF  
FACE OF BRICK AT LOW ROOF  
FACE OF BRICK AT HIGH ROOF  
FACE OF BRICK AT HIGH ROOF

RTU-1 600 LBS  
RTU-2 600 LBS  
RTU-3 600 LBS  
RTU-4 800 LBS  
RTU-5 800 LBS  
HVU-1 1650 LBS  
HVU-2 1650 LBS  
HVU-3 1650 LBS  
HVU-4 1650 LBS  
HVU-5 1650 LBS

18 GAGE  
22 GAGE  
DOUBLE JOIST  
TCCJ  
TNCJ  
L1  
L2  
L3  
1'-2" @ 18" O.C.  
5' SPACES @ 6'-0" O.C.  
FACE OF BRICK AT HIGH ROOF  
FACE OF BRICK AT LOW ROOF  
FACE OF BRICK AT HIGH ROOF  
FACE OF BRICK AT HIGH ROOF

RTU-1 600 LBS  
RTU-2 600 LBS  
RTU-3 600 LBS  
RTU-4 800 LBS  
RTU-5 800 LBS  
HVU-1 1650 LBS  
HVU-2 1650 LBS  
HVU-3 1650 LBS  
HVU-4 1650 LBS  
HVU-5 1650 LBS

18 GAGE  
22 GAGE  
DOUBLE JOIST  
TCCJ  
TNCJ  
L1  
L2  
L3  
1'-2" @ 18" O.C.  
5' SPACES @ 6'-0" O.C.  
FACE OF BRICK AT HIGH ROOF  
FACE OF BRICK AT LOW ROOF  
FACE OF BRICK AT HIGH ROOF  
FACE OF BRICK AT HIGH ROOF

RTU-1 600 LBS  
RTU-2 600 LBS  
RTU-3 600 LBS  
RTU-4 800 LBS  
RTU-5 800 LBS  
HVU-1 1650 LBS  
HVU-2 1650 LBS  
HVU-3 1650 LBS  
HVU-4 1650 LBS  
HVU-5 1650 LBS

18 GAGE  
22 GAGE  
DOUBLE JOIST  
TCCJ  
TNCJ  
L1  
L2  
L3  
1'-2" @ 18" O.C.  
5' SPACES @ 6'-0" O.C.  
FACE OF BRICK AT HIGH ROOF  
FACE OF BRICK AT LOW ROOF  
FACE OF BRICK AT HIGH ROOF  
FACE OF BRICK AT HIGH ROOF

RTU-1 600 LBS  
RTU-2 600 LBS  
RTU-3 600 LBS  
RTU-4 800 LBS  
RTU-5 800 LBS  
HVU-1 1650 LBS  
HVU-2 1650 LBS  
HVU-3 1650 LBS  
HVU-4 1650 LBS  
HVU-5 1650 LBS

18 GAGE  
22 GAGE  
DOUBLE JOIST  
TCCJ  
TNCJ  
L1  
L2  
L3  
1'-2" @ 18" O.C.  
5' SPACES @ 6'-0" O.C.  
FACE OF BRICK AT HIGH ROOF  
FACE OF BRICK AT LOW ROOF  
FACE OF BRICK AT HIGH ROOF  
FACE OF BRICK AT HIGH ROOF

RTU-1 600 LBS  
RTU-2 600 LBS  
RTU-3 600 LBS  
RTU-4 800 LBS  
RTU-5 800 LBS  
HVU-1 1650 LBS  
HVU-2 1650 LBS  
HVU-3 1650 LBS  
HVU-4 1650 LBS  
HVU-5 1650 LBS

18 GAGE  
22 GAGE  
DOUBLE JOIST  
TCCJ  
TNCJ  
L1  
L2  
L3  
1'-2" @ 18" O.C.  
5' SPACES @ 6'-0" O.C.  
FACE OF BRICK AT HIGH ROOF  
FACE OF BRICK AT LOW ROOF  
FACE OF BRICK AT HIGH ROOF  
FACE OF BRICK AT HIGH ROOF

RTU-1 600 LBS  
RTU-2 600 LBS  
RTU-3 600 LBS  
RTU-4 800 LBS  
RTU-5 800 LBS  
HVU-1 1650 LBS  
HVU-2 1650 LBS  
HVU-3 1650 LBS  
HVU-4 1650 LBS  
HVU-5 1650 LBS

18 GAGE  
22 GAGE  
DOUBLE JOIST  
TCCJ  
TNCJ  
L1  
L2  
L3  
1'-2" @ 18" O.C.  
5' SPACES @ 6'-0" O.C.  
FACE OF BRICK AT HIGH ROOF  
FACE OF BRICK AT LOW ROOF  
FACE OF BRICK AT HIGH ROOF  
FACE OF BRICK AT HIGH ROOF

RTU-1 600 LBS  
RTU-2 600 LBS  
RTU-3 600 LBS  
RTU-4 800 LBS  
RTU-5 800 LBS  
HVU-1 1650 LBS  
HVU-2 1650 LBS  
HVU-3 1650 LBS  
HVU-4 1650 LBS  
HVU-5 1650 LBS

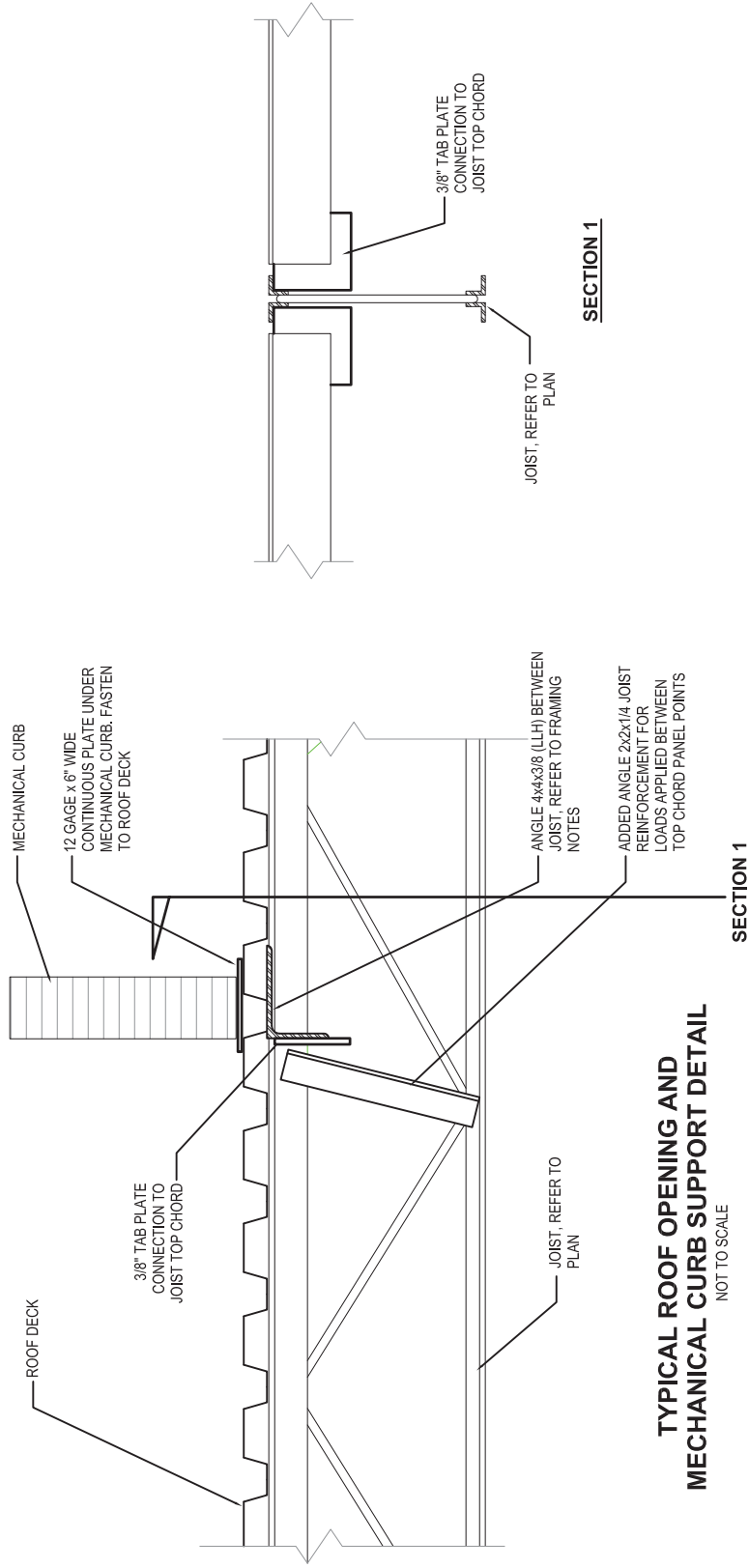
18 GAGE  
22 GAGE  
DOUBLE JOIST  
TCCJ  
TNCJ  
L1  
L2  
L3  
1'-2" @ 18" O.C.  
5' SPACES @ 6'-0" O.C.  
FACE OF BRICK AT HIGH ROOF  
FACE OF BRICK AT LOW ROOF  
FACE OF BRICK AT HIGH ROOF  
FACE OF BRICK AT HIGH ROOF

RTU-1 600 LBS  
RTU-2 600 LBS  
RTU-3 600 LBS  
RTU-4 800 LBS  
RTU-5 800 LBS  
HVU-1 1650 LBS  
HVU-2 1650 LBS  
HVU-3 1650 LBS  
HVU-4 1650 LBS  
HVU-5 1650 LBS

18 GAGE  
22 GAGE  
DOUBLE JOIST  
TCCJ  
TNCJ  
L1  
L2  
L3  
1'-2" @ 18" O.C.  
5' SPACES @ 6'-0" O.C.  
FACE OF BRICK AT HIGH ROOF  
FACE OF BRICK AT LOW ROOF  
FACE OF BRICK AT HIGH ROOF  
FACE OF BRICK AT HIGH ROOF

RTU-1 600 LBS  
RTU-2 600 LBS  
RTU-3 600 LBS  
RTU-4 800 LBS  
RTU-5 800 LBS  
HVU-1 1650 LBS  
HVU-2 1650 LBS  
HVU-3 1650 LBS  
HVU-4 1650 LBS  
HVU-5 1650 LBS

18 GAGE  
22 GAGE  
DOUBLE JOIST  
TCCJ  
TNCJ  
L1  
L2  
L3  
1'-2" @ 18" O.C.  
5' SPACES @ 6'-0" O.C.  
FACE OF BRICK AT HIGH ROOF  
FACE OF BRICK AT LOW ROOF  
FACE OF BRICK AT HIGH ROOF  
FACE OF BRICK AT HIGH ROOF



**TYPICAL ROOF OPENING AND MECHANICAL CURB SUPPORT DETAIL**

NOT TO SCALE

**SECTION 1**

**SECTION 1**

**WALKER  
THE GROUP  
ARCHITECTURE**  
200 S. HARRIS, SUITE 200  
 200 S. HARRIS, SUITE 200  
 RALEIGH, NC 27601  
 Copyright © 2008 by THE WALKER GROUP  
 ARCHITECTURE, INC. All rights reserved.

**TYPICAL ROOF OPENING AND MECHANICAL CURB SUPPORT**

12-0088 Repair Maint. Shop  
HP104

MCB Camp Lejeune, NC

SCALE  
NTS

DATE  
5/27/2014

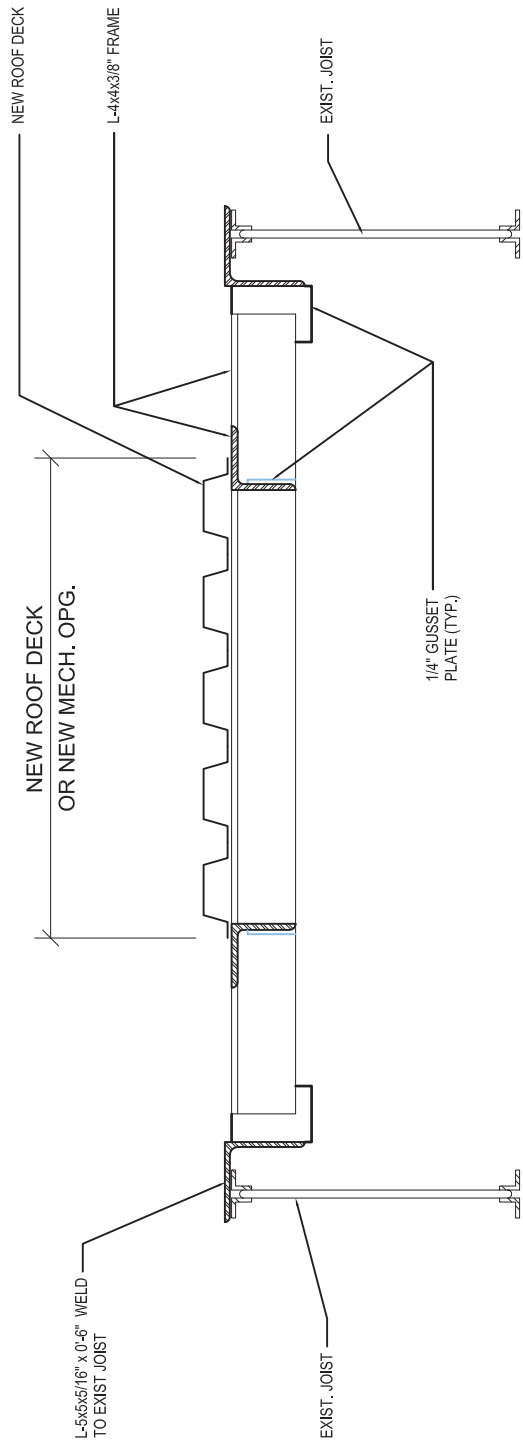
DRAWN BY  
T.J.C.

PROJECT NO  
12-0088 HP104

RFI #

DRAWING NO.

**SK-2.1**



**TYPICAL DECK OPENING AND CLOSURE DETAIL**  
 NEW MECH. OPENING OR EXISTING  
 OPENING CLOSURE IN EXISTING  
 ROOF

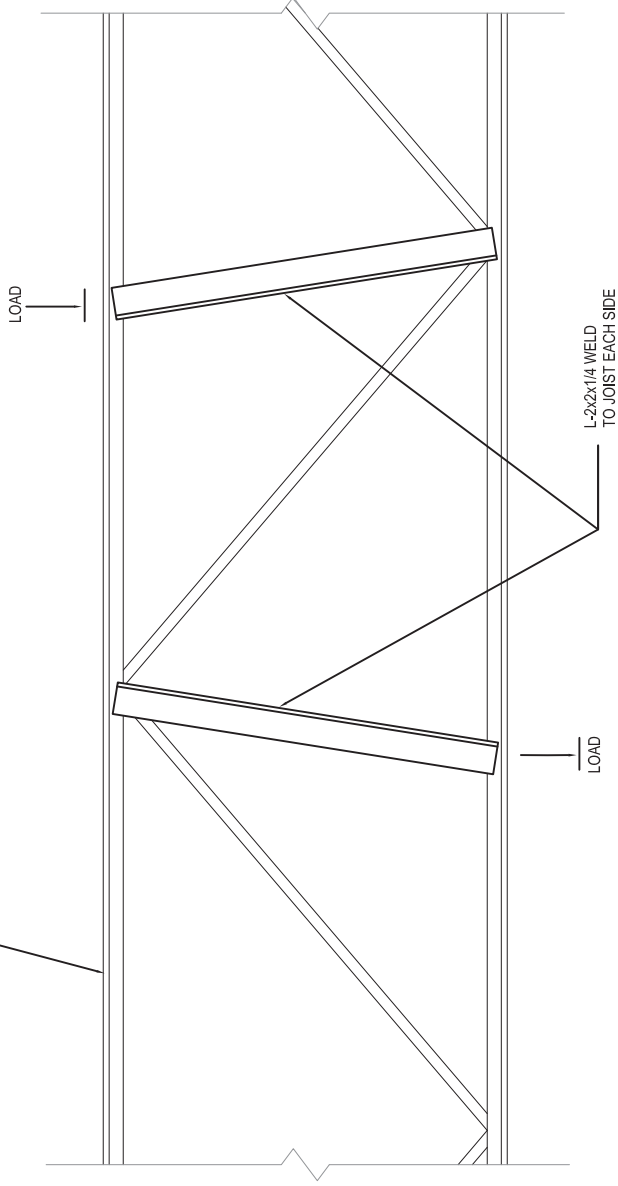
**WALKER  
 THE GROUP  
 ARCHITECTURE**  
200 S. HARRIS, SUITE 200  
 RALEIGH, NC 27601  
 919.876.4176 FAX 919.876.4200  
 Copyright © 2014 by THE WALKER GROUP  
 ARCHITECTURE, INC. All rights reserved.

TYPICAL DECK OPENING AND  
 CLOSURE DETAIL  
 12-0088 Repair Maint. Shop  
 HP104  
 MCB Camp Lejeune, NC

SCALE	NTS
DATE	5/27/2014
DRAWN BY	TJC
PROJECT NO	12-0088 HP104

RFI #  
 DRAWING NO.  
**SK-2.2**

FOR JOIST, REFER  
TO PLAN



**TYPICAL ADDED REINF. @ JOIST  
SUPPORTING LOADS BETWEEN  
PANEL POINTS**  
NOT TO SCALE

**WALKER  
THE GROUP  
ARCHITECTURE**

1000 W. GARDNER STREET, SUITE 200  
RANDOLPH, NC 28134  
704-384-4178  
Copyright © 2014 by THE WALKER GROUP  
ARCHITECTURE, INC. All rights reserved.

SCALE  
NTS

DATE  
5/27/2014

DRAWN BY  
T.J.C.

PROJECT NO  
12-0088 HP104

RFI #

DRAWING NO.

**SK-2.3**

TYPICAL ADDED REINFORCEMENT  
AT JOIST

12-0088 Repair Maint. Shop  
HP104

MCB Camp Lejeune, NC